



SINGLE IMPLANT – AESTHETIC ZONE
Case Study
Nexus Dental Laboratory

Overview

Implant crown for UR1



A young male patient presented with an old, deteriorating dental crown that required replacement. Upon examination, it was found that the tooth beneath the crown had developed a significant crack, rendering it non-restorable.

Considering the structural damage and the patient's high expectations for a durable and aesthetically pleasing outcome, the decision was made to remove the tooth and proceed with the placement of a dental implant to restore both function and appearance.

Implant Placement



Image number one shows the dental implant immediately after placement, demonstrating optimal positioning and stability.



Image number two features the surgical stent used during the procedure, alongside the temporary stock abutment, highlighting the precision tools and provisional components employed to ensure accurate placement and functional aesthetics during the healing phase..

Image number three showcases the synthetic bone grafting material used to enhance the implant site, ensuring adequate bone volume and support for long-term stability.

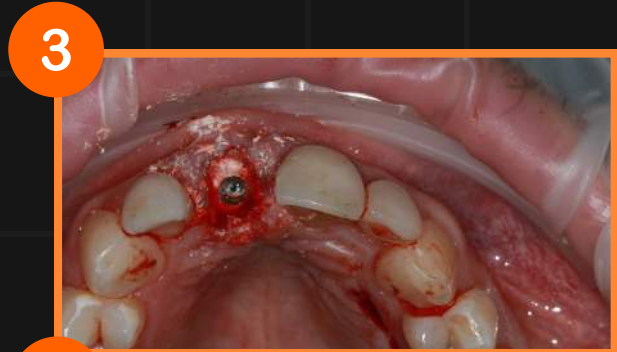


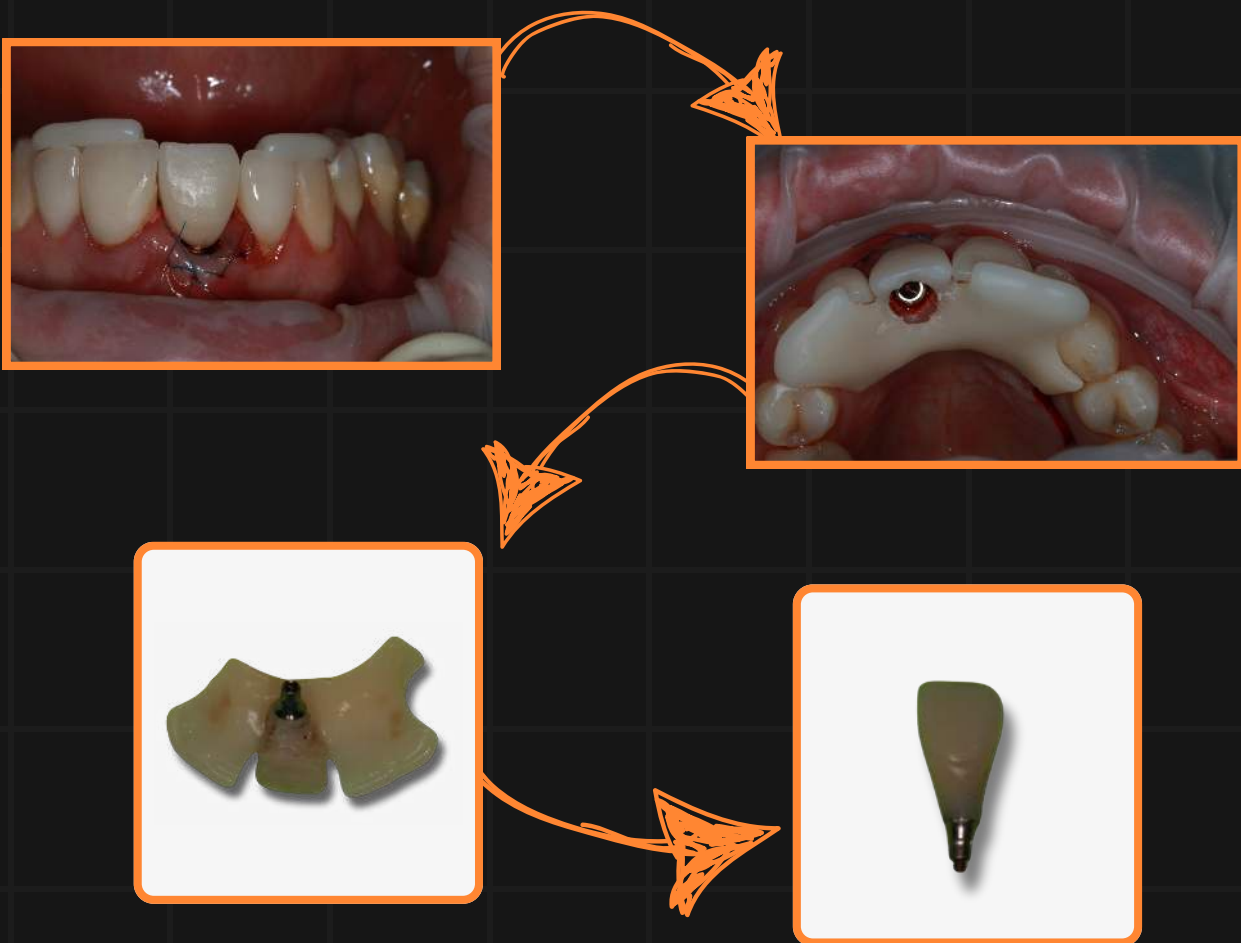
Image number four highlights the gum grafting procedure, demonstrating the soft tissue augmentation performed to improve gingival phenotype and achieve an optimal aesthetic contour around the implant site.



From Removable to Fixed Crown

A removable guide containing a temporary tooth is positioned over the implant site. Using composite resin, the temporary tooth is initially linked to the temporary abutment while in place.

Once removed, additional composite is applied to reinforce the connection and to shape the desired emergence profile for optimal soft tissue support. Finally, the temporary crown is carefully separated from the guide, leaving a functional and well-contoured provisional restoration.



Time to Heal



The patient was sent home with a few small sutures in place to secure the connective tissue graft. This approach aimed to achieve the best possible aesthetic outcome, ensuring a similar emergence profile and ideal cervical area height around the implant site. The accompanying photos illustrate the site with and without the sutures, highlighting the progression of tissue adaptation.



Final Crown Placement



The final restoration was a screw-retained zirconia crown with buccal porcelain layering to enhance aesthetics.

The emergence profile was meticulously copied from the temporary crown to maintain the soft tissue contour achieved during the healing phase.

Additionally, the subgingival area in contact with the soft tissue was crafted with highly polished zirconia, promoting optimal adhesion and tissue health. This approach ensured a durable, functional, and natural-looking result.

Mission Accomplished!

Ready to Transform Your Patient Results?

Join the growing number of UK dental surgeons who trust Nexus Dental to be their trusted partner. Experience the precision, efficiency, and support that set us apart.



Join Us Today at <https://nexus.dental/>

Scan Here

